

665 harkle road



MLS #202000602
\$425,000

This building has a very efficient and pleasant design with a central reception area, 2 offices, and 5 patient rooms off the central core. Built around a conservatory, the outdoors comes inside, adding great beauty and interest. There are 3 bathrooms and 12+ parking spaces. This is an ideal floor plan for alternative medicine, dental or medical. Zoned C-1 and very near both St. Vincent's and Presbyterian Hospitals, this property has been extremely well-maintained. Centrally located to everything and very near the intersection of St. Francis and St. Michaels.

Square Footage is 1,936 sq. ft. plus 120 square feet of unheated storage.

DOUGHERTY
REAL ESTATE CO. LLC

433 W. San Francisco Street
Santa Fe, New Mexico 87501
tel: 505.989.7741
www.dresf.com

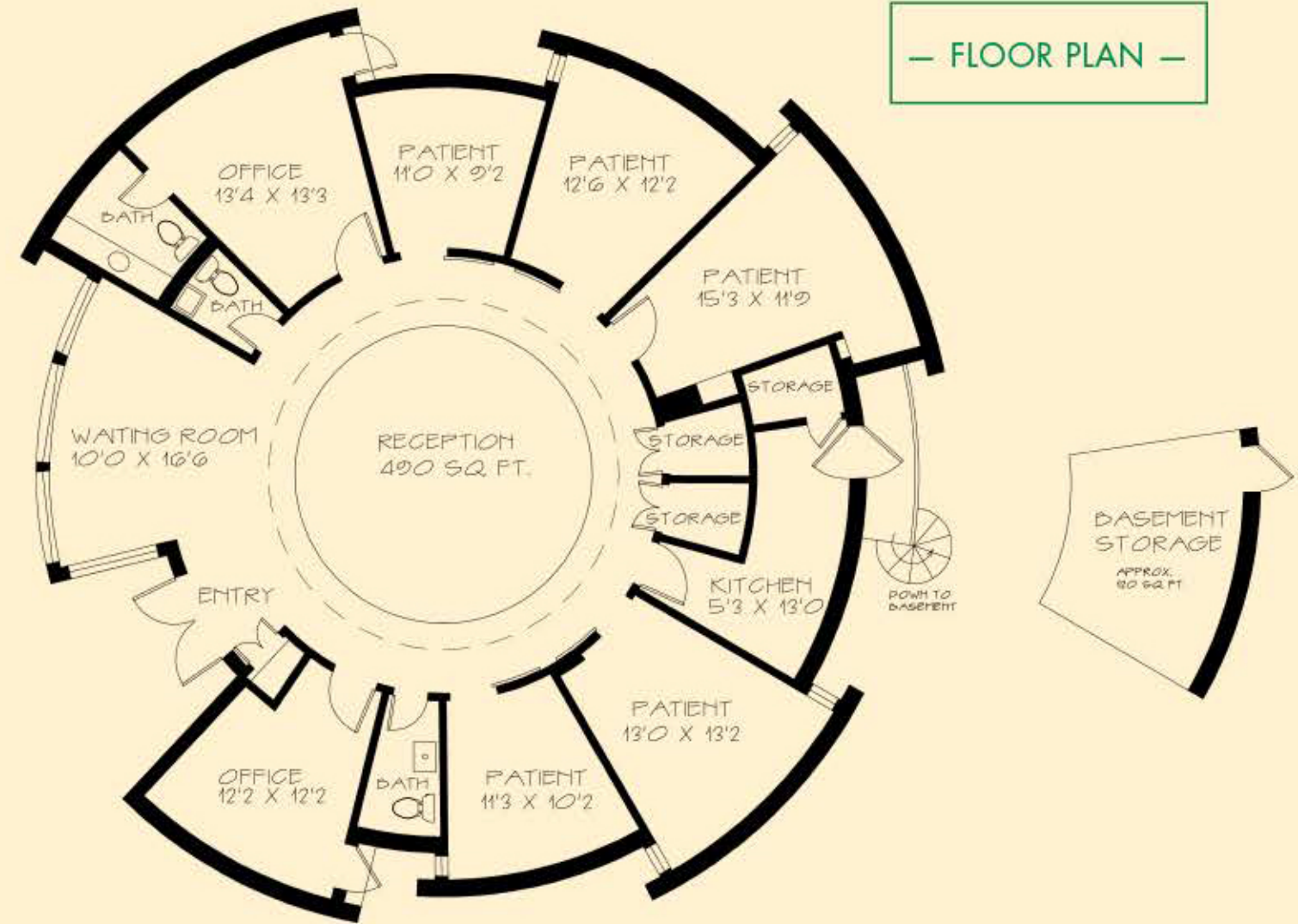
A Full Service Real Estate Brokerage

For an exclusive showing
please contact:
David Dougherty
Office: 505.989.7741
Cell: 505.690.2722
Email: daviddough@aol.com



expect more.

— FLOOR PLAN —



The information contained herein has either been given to us by the owner of the property or obtained from sources that we deem reliable. No warranties or representations expressed or implied are made as to the accuracy of the information contained herein, and same is submitted subject to errors, omissions, change in price, and to any special conditions imposed by our principals.