

# 333 MONTEZUMA, SUITE 4B



MLS# 202503284 \$598,825

Located in Santa Fe's Railyard Arts District this delightful, spacious ground floor unit offers 1,409 sq. ft. of well-designed contemporary space. The suite sits in an enclosed windowed courtyard, so light comes through a series of windows on the street, and moves through the floor-to-ceiling windows, allowing natural light while blocking harsh afternoon sun. Polished concrete floors complement huge, expansive white walls offering an opportunity for multiple floor plans: art gallery, offices, retail space, or perhaps a shared business such as interior design services with a home furnishings studio.

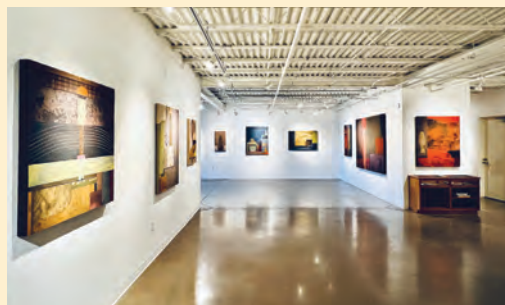
The Railyard Arts District has many wonderful restaurants, such as Andiamo, Cowgirl Santa Fe, and Tomasitas. Retail shops in the area include bookstores, home furnishings, outdoor gear, luggage, and clothing. The District offers the Jean Cocteau movie theater, running fine independent films and, a feature film theater, Violet Crown. A who's who of contemporary art can be found in the Santa Fe Railyard Arts District. The new Vlodem Contemporary Art Museum and SITE Santa Fe are nearby along with other notable art galleries such as Charlotte Jackson Fine Art, Tai Modern, and LewAllen Galleries. Currently used as a gallery, this is a perfectly-located contemporary space for a retail business or office. In addition to location, there are 5 gated parking spaces across the street for employees, and free parking for customers/clients right in front of the gallery.

There are three cornerstones to the Railyard District: Hotel Santa Fe on the South, El Dorado Hotel to the North and at its core, the terminus of the Railrunner from Albuquerque. Simply put — this is one of the best, and certainly affordable, spaces available in Santa Fe. For an exclusive showing please contact David Dougherty at 505.690.2722, or email [daviddough@aol.com](mailto:daviddough@aol.com).

**DOUGHERTY**  
REAL ESTATE CO. LLC

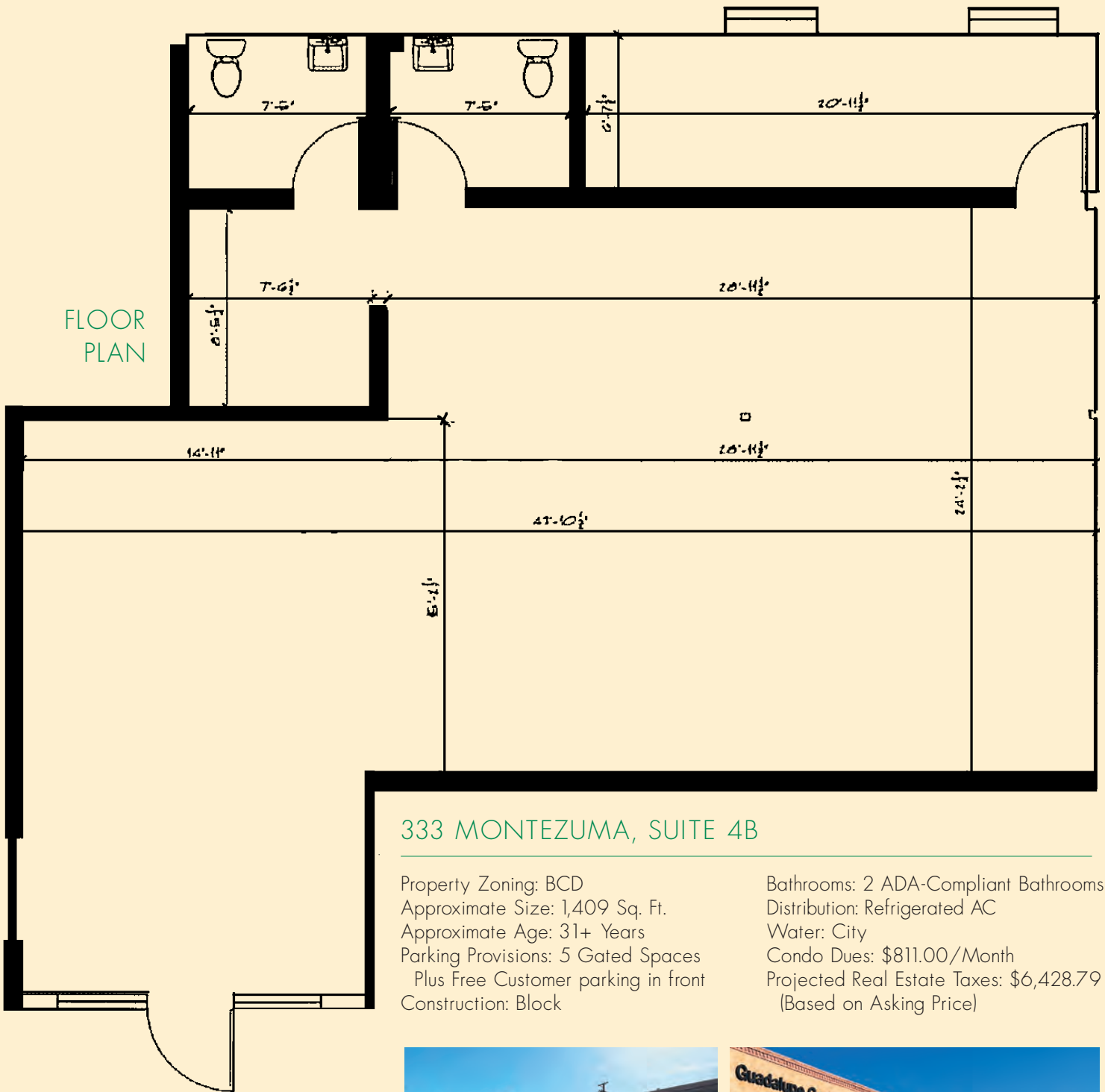
433 W. San Francisco Street  
Santa Fe, New Mexico 87501  
tel: 505.989.7741  
[www.dresf.com](http://www.dresf.com)

A Full Service Real Estate Brokerage



*expect more.*

## FLOOR PLAN



### 333 MONTEZUMA, SUITE 4B

Property Zoning: BCD  
 Approximate Size: 1,409 Sq. Ft.  
 Approximate Age: 31+ Years  
 Parking Provisions: 5 Gated Spaces  
 Plus Free Customer parking in front  
 Construction: Block

Bathrooms: 2 ADA-Compliant Bathrooms  
 Distribution: Refrigerated AC  
 Water: City  
 Condo Dues: \$811.00/Month  
 Projected Real Estate Taxes: \$6,428.79  
 (Based on Asking Price)



The information contained herein has either been given to us by the owner of the property or obtained from sources that we deem reliable. No warranties or representations expressed or implied are made as to the accuracy of the information contained herein, and same is submitted subject to errors, omissions, change in price, and to any special conditions imposed by our principals.