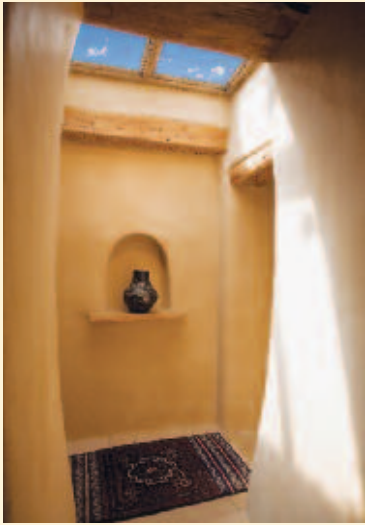




14 via de zorritos





14 VIA DE ZORRITOS

Price available upon request

The natural beauty surrounding this stunning compound, situated on 50+ acres adjacent to the Santa Fe National Forest, is unrivaled. Entering through private gates the paved driveway, lined with gorgeous rock retaining walls, winds past the stable, tennis court and riding arena into the round, bricked motor court, which is shared by both the Main House and Guest House.

A flagstone walkway with sitting areas and undisturbed views of the National Forest rising to the Ski Basin on one side and xeriscaped gardens on the other leads to the formal entrance of the Main House.

The family entrance to the Main House from the motor court and two-car garage is up a staircase, with handmade wrought iron handrails, through an enchanting, European inspired, stone-lined vestibule with a state-of-the-art mechanical room and refrigerated wine cellar.

The supremely outfitted kitchen is designed for simplicity and ease of use with both a china pantry and a food pantry close at hand. The kitchen conveniently opens into a family dining area, a family room, and adjacent to the formal dining room.

Custom details are abundant throughout the home. Handmade chandeliers, Spanish Colonial doors, antique beams and lighted



nichos are used in such an understated way as to make every room warm and inviting. The custom plaster work of both houses, chosen from local earth samplings and combined with micah, creates unique colors and surfaces.

The master bedroom and bath, along with the rest of the house, are designed with a wealth of storage. Stunning Eastern views from the bedroom are matched by beautiful Southern views from the oval, freestanding stone bathtub in the bathroom.

Two additional bedrooms, off a sitting area and bath, are perfect for family quarters or as a complete suite for a parent.

An office, full utility room and 360° views make every room a delightful encounter.

A large outdoor kitchen and dining area on one of several portals is perfect for entertaining and leads to a unique, natural swimming pool that fits perfectly into the lush landscape.

DOUGHERTY REAL ESTATE CO. LLC

433 W. San Francisco Street
Santa Fe, New Mexico 87501
tel: 505.989.7741
www.dresf.com

A Full Service Real Estate Brokerage



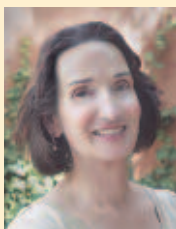


Across the motor court a walkway leads to the Guest House that features a living room, dining area, kitchenette, bedroom, bathroom, and two-car garage.



Accessed through a separate entry door of the Guest House is a fully equipped exercise room, office, art studio, bathroom and laundry area which could be opened to use as additional room for guests. The same attention to detail has been directed to the Guest House as in the Main House, with hand-formed buttresses, coved ceilings, and double adobe walls.

The stable has four stalls with both inside and outside space, a grain prep room, three quarter bathroom, and a large hay storage room with double doors for loading and unloading trucks. Besides an arena for training and exercising, there are trails for riding, biking or hiking on the property and in the National Forest.



For an exclusive showing please contact:
Clara L. Dougherty
Office: 505.989.7741
Cell: 505.690.0471
Fax: 505.986.9236
E-mail: claradough@gmail.com



The information contained herein has either been given to us by the owner of the property or obtained from sources that we deem reliable. No warranties or representations expressed or implied are made as to the accuracy of the information contained herein, and same is submitted subject to errors, omissions, change in price, and to any special conditions imposed by our principals.